

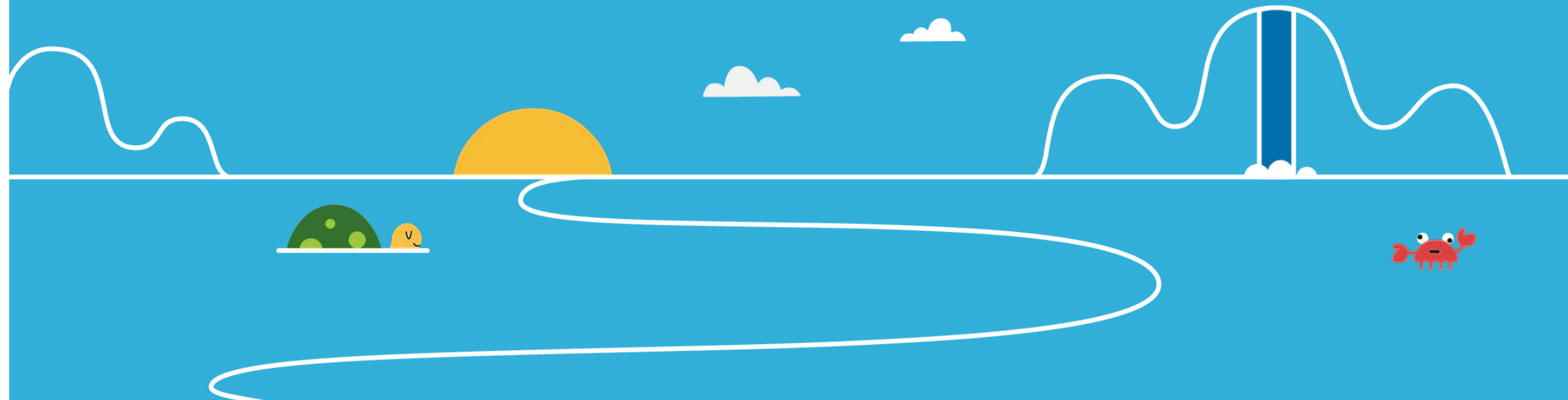


Welcome Back!

**Ready To Learn
Partner Session
Station Sharing &
What comes next?**

And now...

an **ICEBREAKER**



**Our work is so
important to each of
us in unique ways...**

Choose 3 individual words to
describe what your work
means to you and send them
to Haley in the chat.



Ready To Learn CC-ELM Quarterly Meetings



We couldn't do this work without our partners!

Meeting Agenda Sample... 4x a year!

This agenda is from our last one on May 29th, 2020

- **Everything Virtual!**
 - Family & Community Learning Workshops – Partner Stars: Leon County Schools & Muscogee Creek White Earth Tribal Town
 - Bytes & Books – Partner Stars: POPIN! FDLRS! Children’s Movement of Florida! ELC! Hope Community and Junior League too!
 - Professional Development Workshops
- Early Learning Champion – Partner Stars: Roshanna Beard and Apalachee!
- Sesame Street in Communities – Partner Stars: ELC BB, ELC NW & Whole Child Leon!
- Meet the Helpers – Partner Stars: Florida Center for Reading Research!
- WFSU Summer Challenge – Partner Stars Florida KidCare & Knight Foundation & CCC +
- So much more! And then...
- Partner Sharing
- Wrap Up – next meeting date and many thanks!



**COMMUNITY
CLASSROOM
CONSORTIUM**



CELEBRATING

30
Years
OF EDUCATIONAL EXCELLENCE

Challenger Learning Center of Tallahassee
 FSU Museum of Fine Art
 Florida Fish and Wildlife Commission
 Florida Historic Capitol Museum
 Fresh from Florida
 John G. Riley Center/Museum
 Keep Florida Beautiful
 Knott House Museum
 LeRoy Collins Leon County Public Library
 Leon County Office of Sustainability
 Mission San Luis
 Museum of Florida History
 National High Magnetic Field Laboratory

San Marcos de Apalache Historic State Park
 St. Marks National Wildlife Refuge
 TREATS, Inc.
 Tall Timbers Research Station & Land Conservancy
 Tallahassee Astronomical Society
 Tallahassee Museum
 The Foundation for Leon County Schools
 The Sharing Tree
 The Wild Classroom, St. Francis Wildlife Association
 UF IFAS Extension Office
 WFSU Public Media
 Wakulla Springs State Park
 WeatherSTEM/Ucompass.com



1987 - 2017

Opening a world of possibilities!

wfsu
PUBLIC MEDIA

Summer Challenge



sponsored by

Fl  **orida**
KidCare

HEALTH AND DENTAL INSURANCE

Virtual Explorations

POINTS

1. Text 'WFSU' to 274448 to sign up for Bright by Text program for updates and tips. (10 pts)
2. Share your Summer Challenge projects online and tag #wfsusummerchallenge. (5 pts)
3. Take a virtual field trip on [PBS LearningMedia](#) with [KidVision's VPK](#) and complete one of their activities. (5 pts)
4. Practice saying 'hello' in another language with [Let's Go Luna flash cards](#) on [PBS Learning Media](#). (5 pts)
5. Visit [Mission San Luis's website](#), take a virtual tour of their grounds and like them on Facebook for more learning opportunities. (5 pts)
6. Sit down with your family and watch an episode of WFSU's [Local Routes](#) program. (5 pts)
7. Download and play a free [PBS KIDS App](#) game. Share and tell us what you like about it! (5 pts)
8. Subscribe to the [Florida Center for Reading Research YouTube page](#) and complete one of their activities!
9. Visit [Coastal Plains Institute's website](#) and read about the striped newt and ephemeral wetlands. Draw a picture of the striped newt in its natural habitat. Share on Facebook or Instagram, include at least one fact about

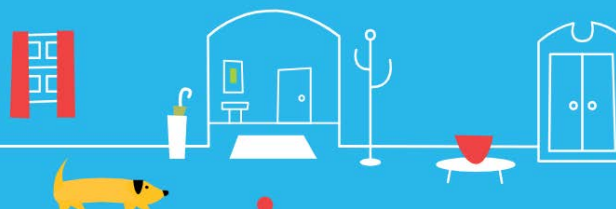
Find all the links
need by scan
this code with
phone's cam

Creations in the House

POINTS

1. Keep a journal of all the Summer Challenge activities you complete. (10 pts)
2. Put on a play at home using a story you know or write your own! (5 pts)
3. Visit [Gadsden Arts Center and Museum's website](#) and complete one of their [Art @ Home](#) activities. Share on social media and tag us (@wfsueducation) and @GadsdenArts. (10 pts)
4. Make your own pizza at home and practice fractions with [Peg's Pizza Fractions](#) on [PBS Parents!](#) (5 pts)
5. Visit the [Museum of Florida History's website](#) and complete an activity from their online [Learning Resources](#). Share on Facebook and tag us (@wfsueducation) and @museumoffloridahistory. (10 pts)
6. Use recycled containers, cardboard boxes, and paper to make recycled art. (5 pts)
7. Create a PBS KIDS character [finger puppet](#), available on [PBS Parents](#). (5 pts)
8. Visit [Florida Public Archaeology's website](#) and complete an activity from the "[Beyond Artifacts](#)" lesson plan. Share on Facebook and tag us (@wfsueducation) and @FPANnorthcentral or @FPANnorthwest. (10 pts)
9. Create an international dish from one of [Let's Go Luna's recipes](#), available on [PBS Parents](#). (5 pts per dish)
10. Make a list of 10 books to read this summer and check them off as you go. (5 pts per book)

TOTAL:



wfsu.org/summerchallenge



FAMILY & Community Learning

White Earth Tribal Town, Muscogee Creek Partners!

wfsu PUBLIC MEDIA

Design a Gorget

Materials:
Crayons and/or markers, scissors, string, glue or tape

Directions:

1. Select your favorite Gorget design and color it in.
2. Cut out the Gorget.
3. Cut out string to a perfect length to fit as a necklace.
4. Glue or tape the Gorget onto the string.

This activity sheet was created in partnership with Dan Penton, Mekko (and former Heles Hoy) Ekwv Nukla Yelwu White Earth Tribal Town



MOLLY OF DENALI

Alaska Native Value

PRACTICE OF TRADITIONS

What are some of the traditions you carry on?



Leon County School Partners!



FAMILY

& Community Learning



Leon County School Partners:
Chaires & Apalachee



Apalachee Tapestry Magnet School of the Arts



NAECY Poster Session!






**Pineview, Sealey, Astoria Park,
Hartsfield, Oak Ridge, Riley, Ruediger
& Springwood Elementary Schools
too!**

Book Trees with Midtown Reader

Patrons of Midtown Reader helped to purchase and donate books to students at Astoria Park and Riley Elementary Schools



 The picture can't be displayed.

**Professional
Development
Workshops &
Conferences**

**Title 1 School Science
Nights, Family &
Community Learning
Workshops, In-School
Programs,**

**21st Century
Afterschool & Summer
Programs**

LEON COUNTY SCHOOLS



The mission of LCS is to educate, inspire and empower all students to become responsible and engaged citizens who are equipped with the critical thinking skills needed to thrive in our global society. EXCELLENCE. LCS pursues the highest standards in academic achievement and organizational efficiency.



Wildwood
Preservation
Society

Molly of Denali Events with partners





Early Learning
Coalition of the
Big Bend Region

The ELC staff work everyday at effectively connecting approximately 7,000 children and their families to the early learning program that best meets the needs of the child and family. Working with a network of over 300 child care programs and local community partners, the ELC provides a comprehensive system of services including the following:

- **Family Services**
- **Child Services**
- **Provider/Teacher Services**

The ELC has a strong network of community partners and volunteers that are an integral component of the ELC's service delivery system. Working with the community, the ELC is the catalyst working to help families be ready to work and children ready to learn.

Super Why! Summer Reading Camps And so many workshops and conferences!



Super Why! Participants

Program Indicator	2018 Summer Jun & Jul 2018	2019 Summer Jun & Jul 2019
# of participating provider sites	5	14
# of child participants	98*	221*

**Attended all or part of the three-week Super Why! summer camp.*

Playful Learning for Educators Workshop Series @ WFSU Public Media



- Sept. 22 - Integrating Media into Playful Learning
- Nov. 17 - Hands-On Learning with PBS KIDS ScratchJR
- Jan. 12 - The Inquiry Process w/ The Cat in the Hat
- Apr. 13 - Engineering Design w/ Ruff Ruffman

#PlayfulLearningPBS

from 10am - 1pm
lunch included
In-Service hours available



Super Why! Results

	2018 Summer Jun & Jul 2018	2019 Summer Jun & Jul 2019
	10%	19%
	11%	23%
	21%	13%
	25%	6%
sts	10%	11%
sts	7%	4%
	16%	21%

identification, letter sounds, phonics, word and comprehension of main idea.

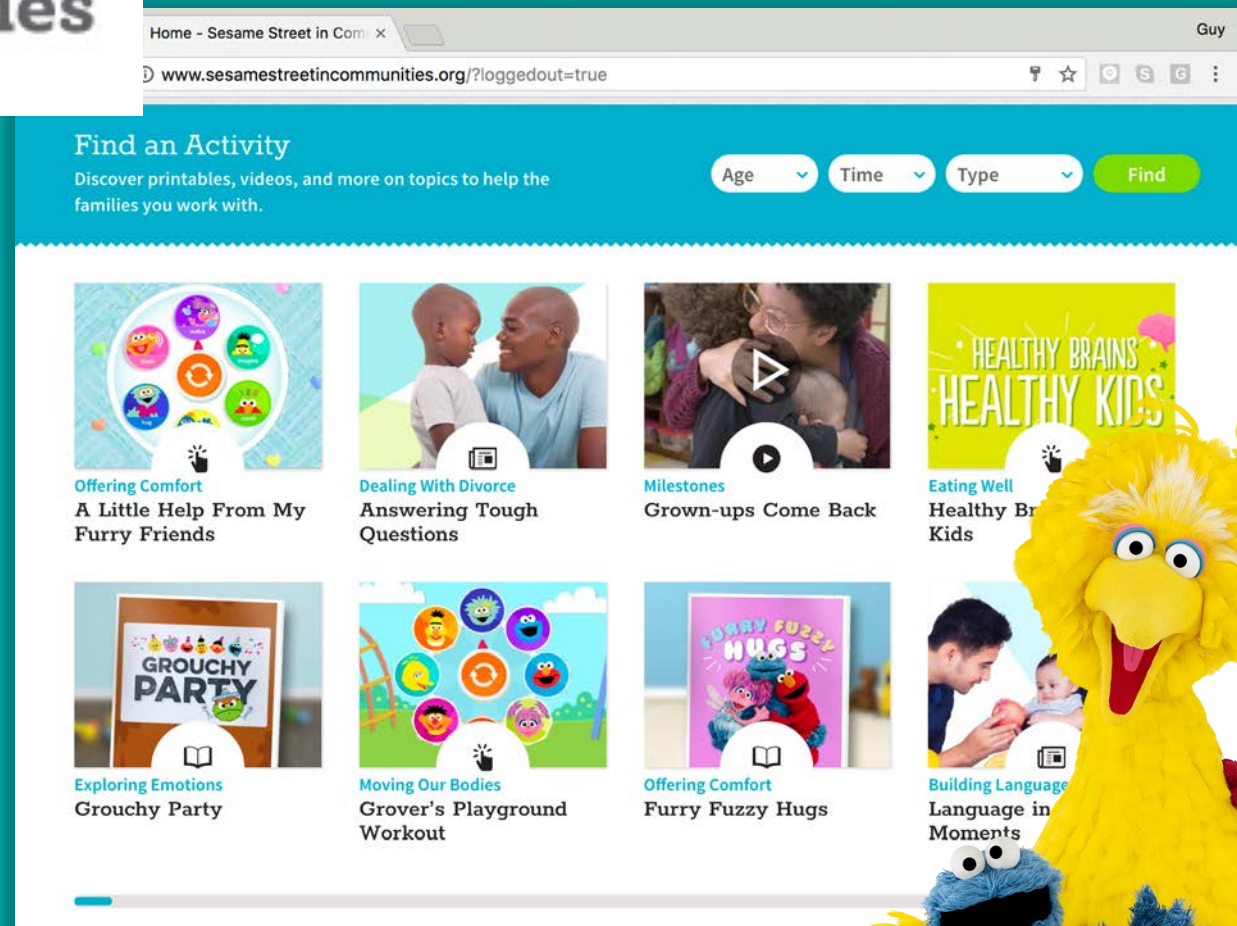
Early Learning Coalition & WFSU Professional Development





<https://sesamestreetincommunities.org/>

- A free online resource for providers and parents/caregivers.
- Create your own profile to save your favorite resources
- Search for topic-specific activities, resources, videos, articles, and more!
- Provider PD workshops



VIRTUAL WORKSHOP SERIES

FOR EARLY CHILDHOOD PROVIDERS & PARENTS



wfsu
PUBLIC MEDIA



SIGN-UP TODAY!



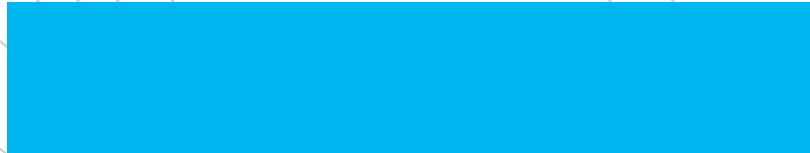
- Ongoing series throughout quarantine
 - Share and discuss WFSU Education, PBS KIDS, PBS LearningMedia, PBS KIDS for Parents resources
 - Videos, Interactive activities, “Show & Tell”
- 2 hours long
 - 2 In-service hours available for Big Bend providers from the Early Learning Coalition
 - Certificates available for providers outside of the Big Bend



Workshop Overview

You are the experts on your kids!
We are the experts on PBS KIDS resources!





PBS KIDS Summer Adventure! Dinosaur Train: Classic in the Jurassic

WATCH

PBS KIDS Videos

- Part 1: *Dinosaur Train: Classic in the Jurassic Song and Dance* (1:21)
- Part 1: *Dinosaur Train: Dinosaur Discoveries: Classification* (1:26)
- Part 2: *Dinosaur Train: Even Bigger Than T-Rex* (2:25)
- Part 2: *Dinosaur Train: Being a Big Dinosaur* (1:52)

READ

Related Books

- Part 1: *The Amazing World of Dinosaurs* by The Jim Henson Company
- Part 2: *Prehistoric Actual Size* by Steve Jenkins

PLAY

Online Games & Mobile Downloads

- Part 1: *Dinosaur Train: Opening Ceremony*
- Part 2: *Dinosaur Train: All-Star Sorting*
- Part 2: *Dinosaur Train: Classic in the Jurassic, Jr.: Bridge Builder*
- Part 3: *Dinosaur Train: Pinecone Pass*
- Part 3: *Dinosaur Train: Air Show*
- Part 4: *Dinosaur Train: Classic in the Jurassic, Jr.: Chow Time*
- Part 4: *Dinosaur Train: Leaf Leader*
- Part 4: *Dinosaur Train: Dinosaur Dive*
- Part 4: *Dinosaur Train: Hydration Station*
- Part 5: *Dinosaur Train: Roarin' Relay*



Early Learning Coalition and WFSU PBS KIDS EdCamp

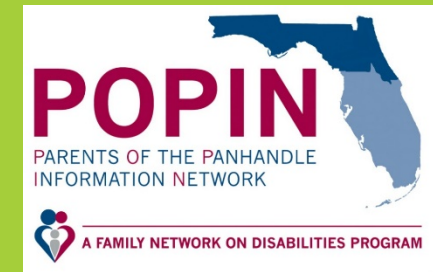


PBS Edcamp

Best Practices

Bytes & Books

A fun hour-long book reading, craft, activity, and media viewing program with preschoolers at George Munroe Elementary, Wakulla Education Center, Jefferson Somerset Elementary, and Hartsfield Elementary.



Bytes & Books!



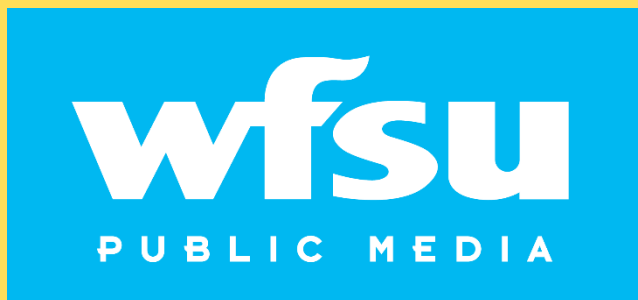


VIRTUAL

BYTES & BOOKS



Florida Diagnostic & Learning Resources System

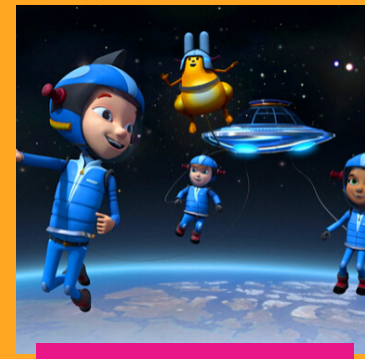


THEMES



Being Good Neighbors

Show: Clifford
Craft: Thank you cards for community helpers



Rocket to Mars

Show: Ready Jet Go!
Craft: Mars Rover



Nature Play

Show: Wild Kratts
Craft: Leaf Bugs



Ocean Deep

Show: Splash & Bubbles
Craft: Coffee Filter Jelly Fish



~180 Families

Reaching from all over Florida
Ages ranged from 1 year olds to 8 year olds.
Households of one child to 5 children.



Dax (1yr old) from Orlando, FL participating during story time

APR 22



Virtual Bytes & Books: Brilliant Bugs

Online event
Wednesday, April 22, 2020 at 11:00 AM EDT

59 / 100

\$0.00

• Sales Ended



APR 8



Virtual Bytes & Books

Online event
Wednesday, April 8, 2020 at 11:00 AM EDT

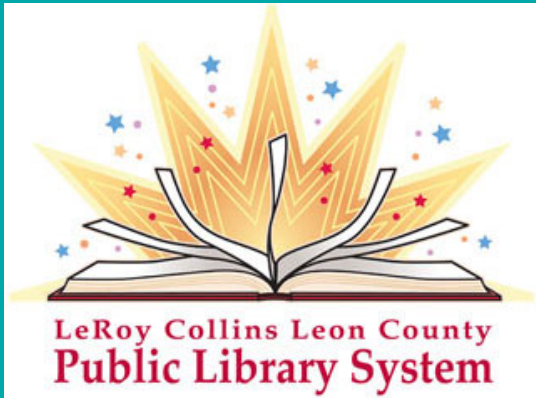
59 / 200

\$0.00

• Sales Ended



LeRoy Collins Public Library and WFSU





Florida Historic Capitol Museum



The Florida Historic Capitol Museum serves to illuminate the past, present, and future connections between the people of Florida and their political institutions through programs of civic education, historic interpretation, and preservation.



Florida Historical Capitol Museum & WFSU Public Media



Discover More about the women who changed the U.S. Constitution

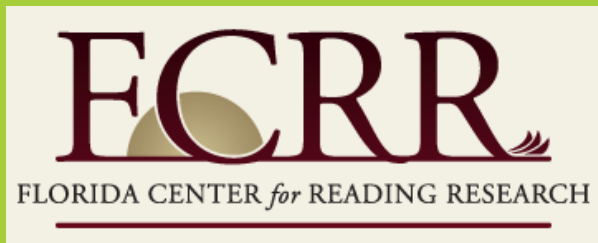


MAJOR FUNDING FOR AMERICAN EXPERIENCE PROVIDED BY LIBERTY MUTUAL INSURANCE, CONSUMER CELLULAR AND BY THE ALFRED P. SLOAN FOUNDATION. MAJOR FUNDING FOR THE VOTE PROVIDED BY THE CORPORATION FOR PUBLIC BROADCASTING, THE NATIONAL ENDOWMENT FOR THE HUMANITIES EXPANDING THE HUMAN ENDEAVOR, ADDITIONAL FUNDING FOR THE VOTE PROVIDED BY THE ARTHUR VINEY DAVIS FOUNDATION, INVESTING IN OUR COMMON FUTURE AND BY THE BARBARA LEE FAMILY FOUNDATION FUND. ADDITIONAL FUNDING FOR AMERICAN EXPERIENCE PROVIDED BY THE ROBERT SLOAN LORRAINE FOUNDATION, THE DOCUMENTARY INVESTMENT GROUP AND BY PUBLIC TELEVISION PRESENTS. AMERICAN EXPERIENCE IS PRODUCED FOR PBS BY ROBIN EVISON.

LIBERTY Mutual INSURANCE | Consumer Cellular | ALFRED P. SLOAN FOUNDATION | cpb | NATIONAL ENDOWMENT FOR THE HUMANITIES | WVD | The Arthur VINEY DAVIS FOUNDATION | BARBARA LEE FAMILY FOUNDATION FUND | ROBERT SLOAN LORRAINE FOUNDATION | THE DOCUMENTARY INVESTMENT GROUP | WGBH | wfsu

Meet the Helpers

In January 2020, we will embark on a research project with UCF. With the help of FCRR, we will be conducting research with students in Leon County Schools to help them identify the Helpers in their communities using videos produced by WUCF and funded by CPB.





FCRR

FLORIDA CENTER *for* READING RESEARCH

Improving reading through science

The Florida Center for Reading Research (FCRR) is an interdisciplinary research center at Florida State University.

Drawing from multiple disciplines, FCRR investigates all aspects of reading across the lifespan. Through rigorous and robust **research, innovation, and engagement**, FCRR advances the science of reading to improve learning and achievement from birth through adulthood.

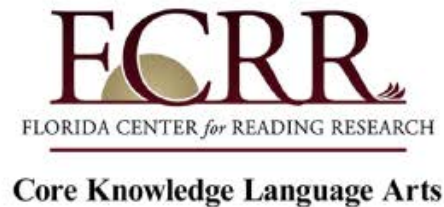
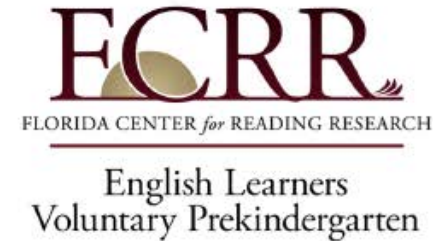
<https://fcrr.org>

@TheFCRR





**Currently, over 30 ongoing research projects
and over \$40M in grant funded research.**



Project VOICES

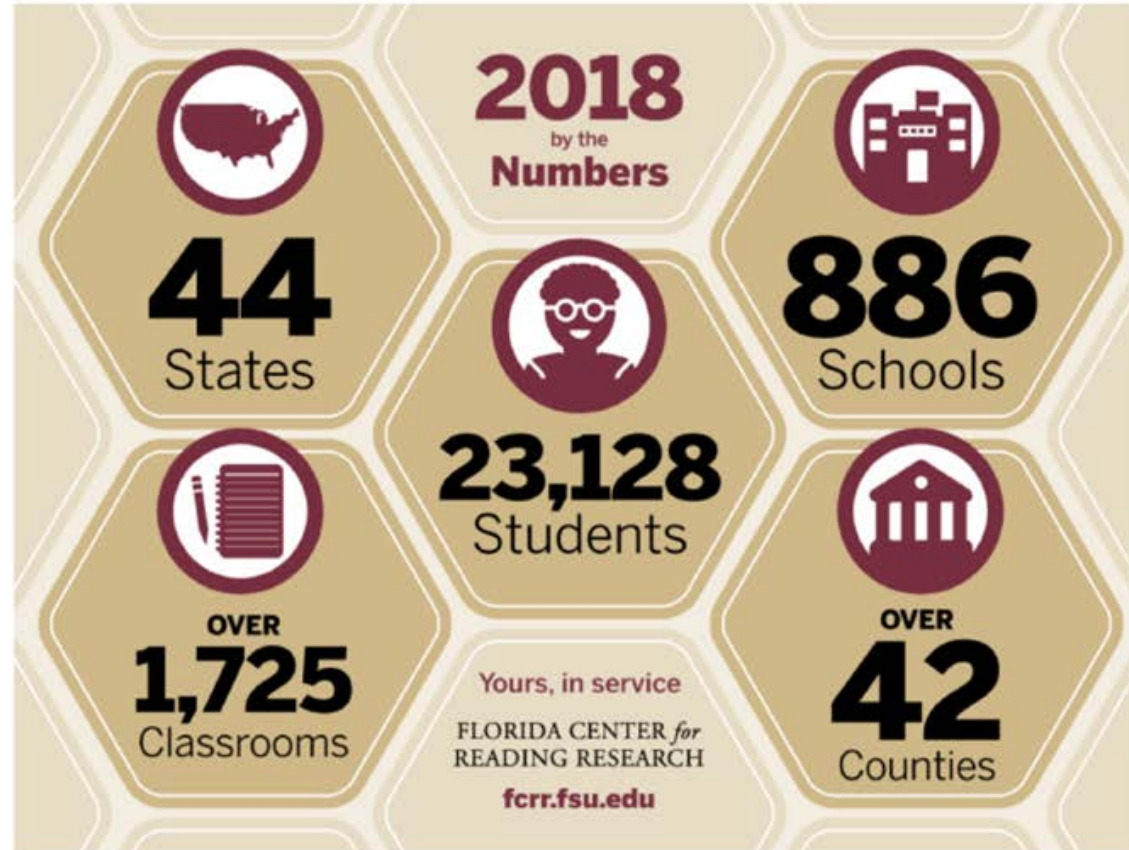




FLORIDA CENTER FOR READING RESEARCH

FCRR leads:

- evidence
- rigor
- integrity
- interdisciplinary
- nationally
- internationally



From all of us at FCRR, thank you.



Mission

FCRR contributes to the quality, accessibility, use and relevance of reading research by leveraging our talent, resources, and partnerships to:

- conduct basic and applied *interdisciplinary research* on all aspects of literacy to benefit learners;
- apply *rigorous* and *innovative* approaches that are *responsive* to the pressing problems of practice, policy, and research;
- develop innovative multimedia resources to *translate* and *disseminate* quality research relevant for diverse stakeholders;
- create and sustain meaningful, mutually supportive, and lasting *cross-sector partnerships* with diverse organizations locally, nationally, and internationally;
- engage in *leadership* and *entrepreneurial* activities to empower researchers, practitioners, and other stakeholders to discover solutions, transform practices, and make improvements continuously; and
- foster a *diverse intellectual community* of researchers and practitioners to advance the science of reading and apprentice the *next generation* of scholars and leaders.



Mission: taking a place-based, collective impact approach, The Village creates, supports, and sustains research-practice partnerships to support reading achievement, school readiness, and school success among vulnerable children and youth.

How We Partner:

- a. connect our partners to research- and evidence-based practices, programs, and resources to help them address their most pressing problems of practice.
- b. champion our partner's programs, activities, and initiatives that support children, families, schools, and communities.
- c. collaborate to provide our partners with evidence that helps them learn, tell their story, and act to improve outcomes for children, families, schools, and communities





The VILLAGE wfsu

FLORIDA CENTER for READING RESEARCH PUBLIC MEDIA



BYTES & BOOKS



MEET THE HELPERS



wfsu
PUBLIC MEDIA

Be My
Neighbor
2019 Day!



UGGA MUGGA
The tige-y is back

When: February 2nd from 10-2
Where: Kleman Plaza &
Across Downtown Tallahassee

Explore our very own Neighborhood of Make Believe
Meet Daniel Tiger, play, & craft with neighbors!

More info: wfsu.org/neighborday2019

10,049 people 19 engagement events

Professional Development

845 educators received free training in the form of workshops & PBS-Edcamps!

86,561 total reach @wfsueducation +300% follower growth @wfsueducation

Family & Community Learning

188 families Ruff Ruffman Sensational Science Play & Learn SCIENCE! The Cat in the Hat Knows A Lot About That! PBS KIDS ScratchJR

Gold Star Partners



wfsu
PUBLIC MEDIA

2017-18

POWERED BY
READY TO LEARN*



PBS KIDS



Bytes & Books

1,000 rural preschoolers engaged in educational in-school activities featuring books, crafts, and PBS KIDS content!

2,810 books given away!

Grants & Special Projects

- Ready To Learn
Cyberchase Text-to-Talk
Shakespeare Uncovered
FSU Diversity & Inclusion

Summer Camp

220 PreK students

WFSU has been a RTL station for the past 10 years, receiving special federal funding based on our twenty-four hour PBS KIDS programming and our children, families, and educators through our PBS KIDS programs, video, interactive games and apps.

wfsu
PUBLIC MEDIA



2016-2017

POWERED BY
READY TO LEARN*

*WFSU is one of eleven public media stations nationwide to receive special federal funding based on our viewing area's demographics. This money goes a long way, providing hundreds of at-risk families and students educational support in the form of PBS KIDS programming and outreach!

98 national and community-based partnerships have helped us provide intentional, educational programs for

445 families / caregivers, 6,447 of their children, & 959 of their educators!

The contents of this document were developed under a cooperative agreement #PRU205A150003, from the U.S. Department of Education. However, these contents do not necessarily represent the policy of the Department of Education, and you should not assume endorsement by the Federal Government. PBS KIDS and the PBS KIDS Logo are registered trademarks of PBS. Used with permission.

Parent Texting Initiative: Bright by Text

Bright by **Text**

Text "WFSU" to 274448

- * sign up for activities, games and resources tailored to your child's age from prenatal to 5
- * messages include info about local resources and events
- * each text links to a landing page with more information including short activity videos and related books



Prenatal



Social-Emotional



Nutrition



STEM

Science, Technology, Engineering and Math



Safety



Language and Literacy



Caregiver Resilience



Oral Health



Developmental
Milestones

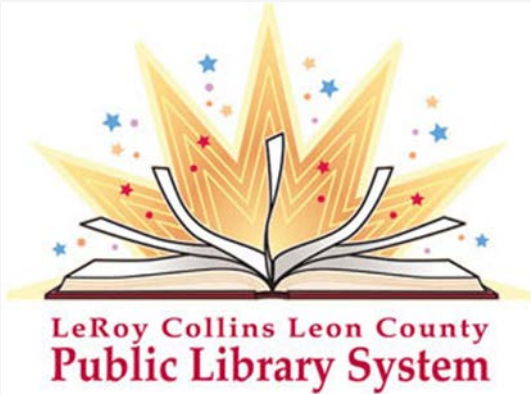


Brain Development

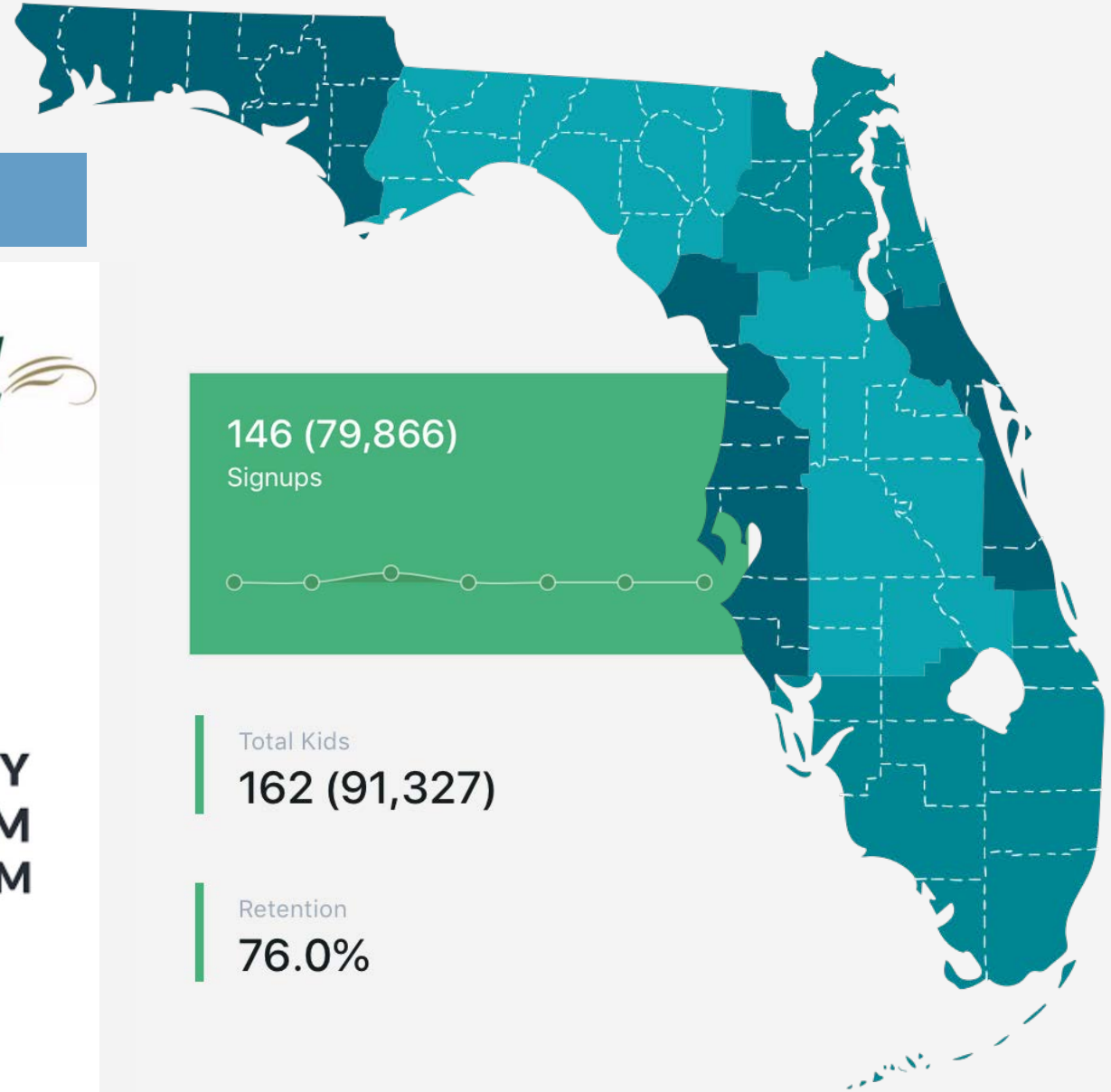
Bright
by

Text

2,825 (3,072,083)
Community Messages



Participating Partners



Example:

Join WFSU for an interactive workshop for early educators and parents with early learners!
05/28 @ 6PM-Registration Required!
<https://bbtxt.org/3bYCTs7>



WFSU BRIGHT BY TEXT EVENT SUBMISSION FORM

Contact Name:

Organization:

Contact Phone:

Contact Email:

Required: Website link related to your event or organization. Can also be an online pdf.

Message Title:

Write your message in ENGLISH

(Max 140 characters)

Write your message in SPANISH

(We can translate if needed)

Date/Time you want

this message sent:

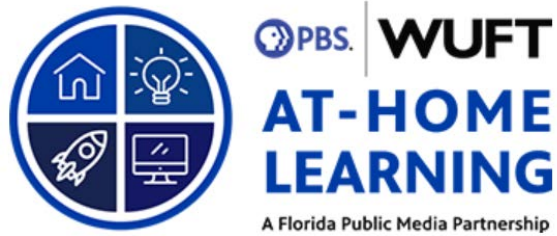
Receipient Child age

range (0-5 years):

Message Recipient

county/zip code:

NOTE: We need a minimum of two weeks lead time to schedule a text.



"Of all the services WJCT provides, nothing surpasses our commitment to our most precious resource. WJCT is committed to promoting joyful learning and empowering children to success in school and in life."



SOUTH FLORIDA PBS KIDS



Watch South Florida PBS Kids online and on the go! Play games and get access to parent and teacher resources.

[Watch Now](#)

KIDVISION PRE-K



KidVision Pre-K makes learning Florida's Early Learning and Development Standards for preschoolers lively and fun for teachers, parents and children.

[Learn More](#)





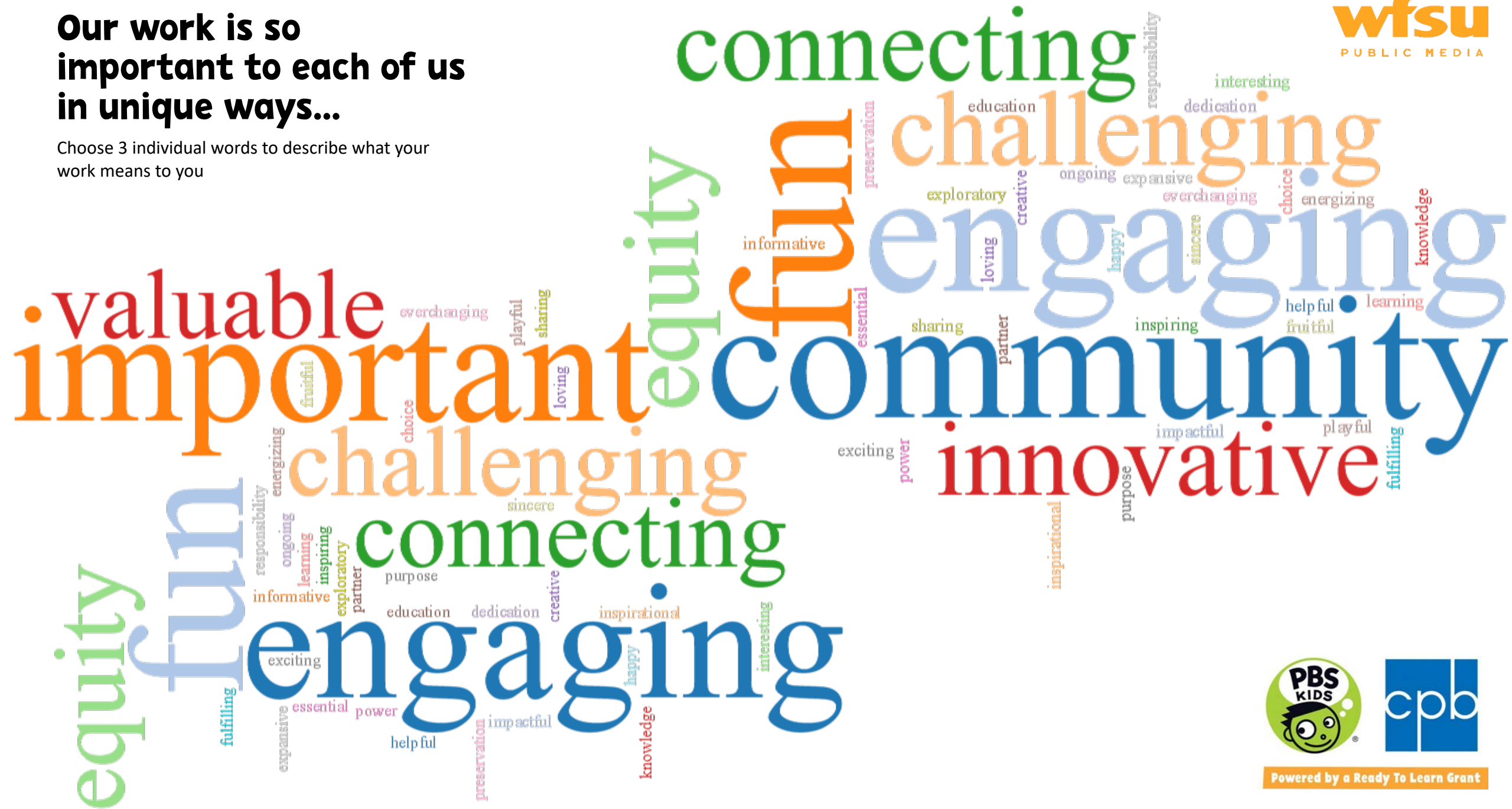
Next Steps!

WFSU Florida Station Virtual EdCamp Poll

RTLCon 2020 Survey

Our work is so important to each of us in unique ways...

Choose 3 individual words to describe what your work means to you



WFSU RTLCon Farewell!



Thank you for being with us!

