



COMMUNITY
CLASSROOM
CONSORTIUM

SUMMER CHALLENGE

2022 Activity Book

Level Up Land!



envision[®]
credit union



Powered by a
Ready To Learn Grant

Welcome to a Summer of Fun!

WFSU's Summer Challenge: Level Up Land!

Participate in WFSU's annual Summer Challenge by completing activities in the Summer Challenge Checklist, found in the center of this activity book and online at wfsu.org/Summerchallenge. As you check items off, earn points to win prizes at the end of the summer! Not only will you win points and prizes, but you will level up in all sorts of subjects and skills!

This year's Summer Challenge launches our Ready To Learn “Learning Neighborhood” called: **Level Up Land!** Level Up Land is modeled on our North Florida home and so are our challenges. Each challenge is designed to help children level up in reading, communication, observing, problem-solving, and more. Families can strengthen all kinds of skills by using every day activities and exploring places close to home! Every bit of knowledge gained and skills practiced strengthens your child and prepares them for the ultimate challenge, entering the **World of Work!** In between challenges, tune in to WFSU-TV and WFSU.org and be inspired by our many programs, local videos, apps and games all summer long!

WFSU's Summer Challenge and our Level Up Land! Initiative was inspired by the brilliant Community Classroom Consortium, a coalition of more than 30 cultural, scientific, natural history, and civic organizations in North Florida and South Georgia. Their Passport to Adventure program has evolved into this Activity Guide with challenges. We have so many amazing partnership that have made Level Up Land! possible. They are featured in this booklet along with our wonderful sponsor, **Envision Credit Union**. Thank you all for helping us **Level Up!**

Questions about Summer Challenge? Email WFSU Education:
education@wfsu



wfsu
PUBLIC MEDIA

To learn more about the CCC, find us on Facebook
[@CommunityClassroomConsortium](https://www.facebook.com/CommunityClassroomConsortium)



Powered by a
Ready To Learn Grant

WFSU Summer Day Programs at the Library

Join us for a series of special **day programs** and family open houses at select Leon County Library locations. Each program weekend will feature activities from PBS KIDS shows such as Cyberchase, Molly of Denali, and more!

On **Fridays**, we are offering free day programs for *pre-registered* children to be dropped-off in the program room.
Pre-registration is required.

On **Saturdays**, we are offering free drop-in programs for parents/guardians and children to learn together with hands-on activities.



Day Program Details

To pre-register visit
wfsu.org/summerchallenge



Questions?
Email education@wfsu.org

Date	Time	Location
Friday, June 10 Saturday June 11	10 am – Noon	Woodville Branch Library, 8000 Old Woodville Rd
Friday, June 24 Saturday June 25	10 am – Noon	Eastside Branch Library, 1583 Pedrick Rd
Friday, July 8 Saturday July 9	10 am – Noon	LeRoy Collins Leon County Library Main Branch, 200 W Park Ave
Friday, July 22 Saturday July 23	10 am – Noon	B.L. Perry Branch Library, 2817 S Adams St
Friday, August 5 Saturday August 6	10 am – Noon	Lake Jackson Branch Library, 3840 N Monroe St # 300

Season 3 of WNET's Camp TV is here!



Join us throughout the summer on WFSU-TV to watch kids from all over the country read books.

Our friend, Maya, from Maya's BookNook, will be reading "Not Quite Narwhal" by Jessica Sima.



How many of the books on this checklist will you read this summer?

Visit mayasbooknook.com for more reading resources!

- | | |
|--|---|
| <input type="checkbox"/> Shiver Me Letters by June Sobel (Author), Henry Cole (Illustrator) | <input type="checkbox"/> Mustache Duckstache by Amy Young (Author), AJ Young (Illustrator) |
| <input type="checkbox"/> The Invisible String by Patrice Karst (Author), Joanne Lew-Vriethoff (Illustrator) | <input type="checkbox"/> Have You Filled a Bucket Today?: A Guide to Daily Happiness for Kids by Carol McCloud (Author), David Messing (Illustrator) |
| <input type="checkbox"/> Night at the Fair by Donald Crews (Author, illustrator) | <input type="checkbox"/> Tiny, Perfect Things by M. H. Clark (Author), Madeline Kloepper (Illustrator) |
| <input type="checkbox"/> A Stone Sat Still by Brenden Wenzel (Illustrator) | <input type="checkbox"/> I am Love: A Book of Compassion by Susan Verde (Author), Peter H. Reynolds (Illustrator) |
| <input type="checkbox"/> Splashdance by Liz Starin (Author) | |
| <input type="checkbox"/> Not Quite Narwhal by Jessica Sima (Author, illustrator) | |



CHALLENGER LEARNING CENTER

S.T.E.M. BUILDING CHALLENGE

ARTEMIS LUNAR LANDER

POST A PICTURE OF YOUR **ARTEMIS LUNAR LANDER** AND TAG US @CHALLENGERTLH TO BE FEATURED ON OUR SOCIAL MEDIA!

As we look forward to the ARTEMIS Mission returning people to the moon for the first time in nearly 50 years, we remember the Apollo lunar landings that came first.

CHALLENGE:

Plan, design and construct a tin foil model of the ARTEMIS Lunar Lander. Let your imagination soar to new heights and build your version of what the ARTEMIS Human Landing System may look like.

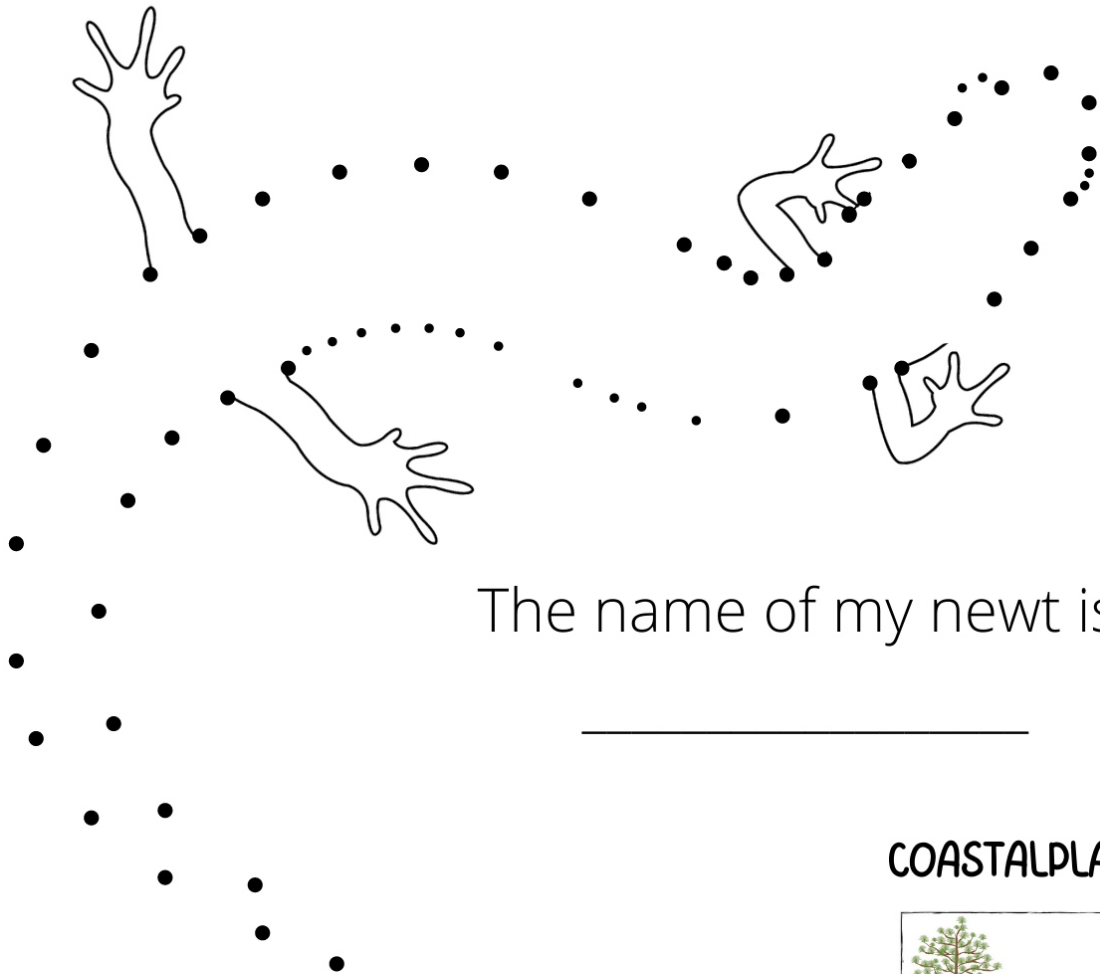
Come to the Challenger Learning Center to see a 1/3 scale model of the Apollo Lunar Module. While you're here, see a movie at our IMAX Theatre or the Downtown Digital Dome!



MEET SURFER, THE STRIPED NEWT!



Striped newts are rare salamanders found only in Florida and Georgia. Each newt has a stripe pattern that is unique! Use the outline to draw and then color your own unique newt. Better yet, join us at one of our monthly Dipnetting Days and learn all about striped newts and other amazing amphibians.



The name of my newt is:

COASTALPLAINS.ORG



SCAVENGER HUNT

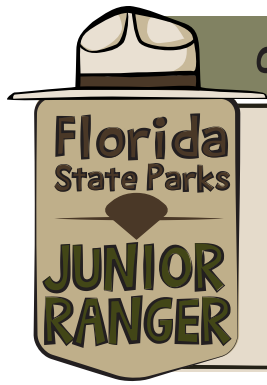
In celebration of 20 years of *Cyberchase*, go on a scavenger hunt to find these 20 different things. To keep track of all the items you find, cross out each box as you go.

FIND			
1. Something green 	2. Something round 	3. Something that makes noise 	4. Something you love 
5. Something you can use to measure 	6. Something with a number on it 	7. Something that keeps you warm 	8. Something that goes on your head 
9. Something that's taller than you 	10. Something 	11. Something that comes in a pair 	12. Something with wheels 
13. Something that starts with "D"  Digit	14. Something you can use to play sports 	15. Something that lights up 	16. Something that can open and close 
17. Something with buttons 	18. Something that can bounce 	19. Something shaped like a triangle 	20. The number 20! 



Watch **CYBERCHASE** on PBS KIDS

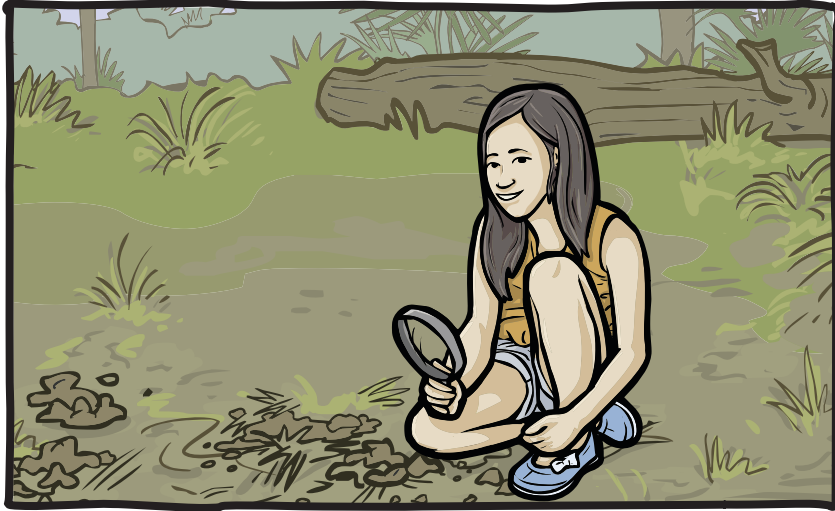
Check local listings or visit pbskids.org/cyberchase



SEARCH WITH SENSES

Name _____

Date _____ Park _____



Florida State Parks are full of natural treasures.

Use your senses of sight, hearing, smell and touch to discover the treasures in this park.

Below are clues for treasures to find. Explore the park and write what you discover. Remember to never touch anything you are not sure is safe. Ask an adult for help first and always leave what you find where you found it.

Use your



to look for these clues.

Something red _____

Something older than you _____

Something which does not belong _____

Use your



to listen for these clues.

A nature sound _____

A human-made sound _____

Something which flies _____





NATURAL RESOURCES ACTIVITY

SEARCH WITH SENSES

People have five senses. For this activity you are only using four. **What sense are you not using?** _____

Use your



to smell for these clues.

Something in the air _____

Something on the ground _____

Something in bloom _____

Use your



to feel for these clues.

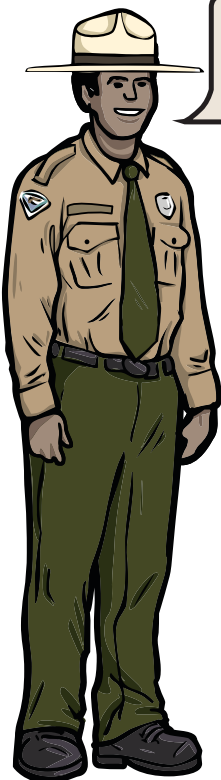


Ask parent or guardian first if something is safe to touch.

Something soft _____

Something rough _____

Something round _____



Treasures you sensed today could be harmed if they are not protected by Park Rangers.

Which of the items you sensed needs to be protected? How did you sense it?

How can you help Park Rangers protect the parks' treasures?



BEYOND THE BOOK GUIDE

The Thing About Bees: A Love Letter by Shabazz Larkin

Book Summary

Have you ever felt scared because you didn't know much about something? If so, you'll love *The Thing About Bees*! A lot of things are scary until we learn more about them and what they do. Sometimes, the first step to not being scared of something is to learn three new things about it. Readers will follow along as the author explains the important role bees play in the world and teaches us that love can conquer fear after all.

Before Reading the Story

- Discuss what you see on the cover of the book.
- Make predictions on what the story may be about.
- Discuss what you already know about bees.
- Have you ever seen a bee up close? If so, discuss how you felt and where you were.
- Search for videos of bees pollinating.

Target Vocabulary

- **Pollen:** the very fine, usually yellow, dust that is produced by a plant
- **Pollination:** to move pollen from one plant to another
- **Nectar:** a sweet liquid made by plants and used by bees to make honey
- **Process:** a series of changes that happen naturally to produce something
- **Presto:** suddenly, as if by magic
- **Prance:** to walk or move in a lively and proud way
- **Sting:** to cause a quick, sharp pain
- **Picnic:** a meal that is eaten outdoors
- **Drizzle:** to pour a small amount of liquid over something
- **Mood:** the way someone feels



Scan QR code for
the book!





BEYOND THE BOOK GUIDE

During the Story

- Read the book aloud to your child.
- Make predictions about the text based on the illustrations.
- Provide definitions and connections for any of the target vocabulary words that may be unfamiliar.
- Ask questions throughout the story to help your child comprehend what's being read.
- Have your child repeat unfamiliar words.

After Reading the Story

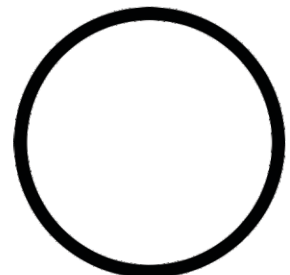
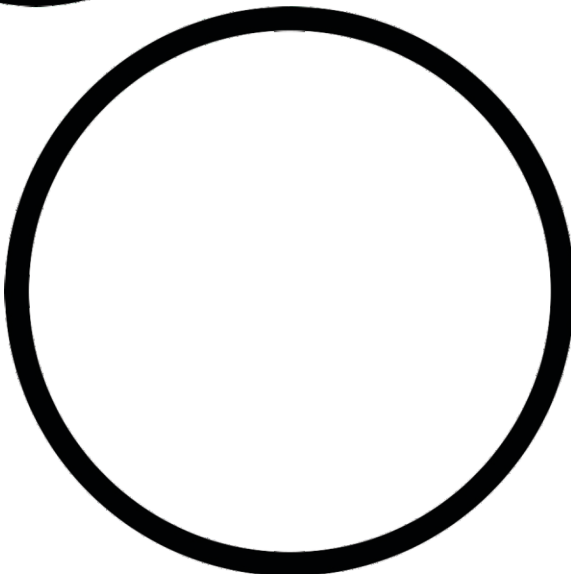
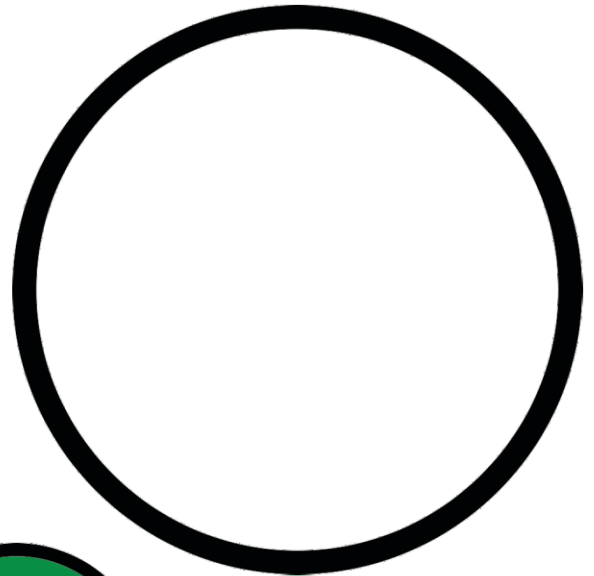
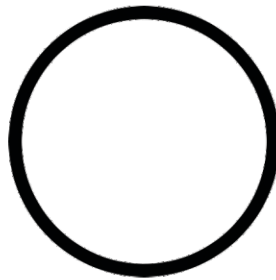
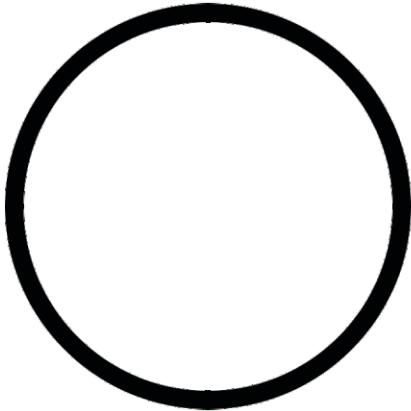
- Have your child retell the story in their own words using the pictures.
- Using materials available (e.g. paper, pencils, markers, crayons), create a picture or poem about bees.
- Discuss three new things the book taught you about bees.
- Discuss the traits of a nice bee and compare them to the traits of a rude bee.
- Google or search Youtube for videos about beekeepers. Discuss what you learned from your search.

Example Questions to Ask

- What is the worst thing of all about bees?
- When bees sneak up behind you they fill you with ____.
- Bees help pollinate the plants that give us our favorite fruits and vegetables. Tell me about some fruits and vegetables that you love.
- Why would life without bees be sad?
- How did the narrator explain that bees are just like you?
- Tell me about a time you were in a bad mood. How did your parents help you feel better?
- What happens when a bee and a flower love each other?

CAMPAIGN BUTTONS

People who run for office make campaign buttons that remind voters to vote for them or certain issues on election day. Color, decorate, and cut out the campaign buttons below. Then tape them to your shirt to show your support! Visit us to see our newest exhibit, all about campaigning, in July 2022.



SILLY SPEECH GENERATOR

First, fold the right half of page behind the left. Then on the left side below, in the blank spaces, write a word matching the requested part of speech. You can do this alone or with a friend. When you are finished, flip the page and write your words, in order, onto the blank lines of the speech. Read the completed speech aloud and enjoy the silliness.

Plural Noun _____

Noun _____

Verb _____

Adjective _____

Adjective _____

Number _____

Verb _____

Plural Noun _____

Plural Noun _____

Adjective _____

Adverb _____

Famous Person _____

Noun _____

Plural Noun _____

Adjective _____

Verb _____

Noun: a person, place, thing or idea (cat, Florida, party)

Plural Noun: more than one, a group, sometimes ends in "s" (cats)

Verb: an action word that tells a noun what to do (run or jump)

Adjective: a describing word (shiny, tall, or great)

Adverb: tells more about a verb. Answers the questions how, when, where, how often, and in what way. Sometimes ends in "ly" (slowly)



FLORIDA HISTORIC
CAPITOL MUSEUM

400 S Monroe Street, Tallahassee, FL

(850) 487-1902

flhistoriccaptol.gov

Fellow _____ ;
(plural noun)

Thank you for your _____
(noun)

as I _____ before you today
(verb)

as the _____ governor of
(adjective)

this _____ state. Over the next
(adjective)

_____ years, our state shall _____
(number) (verb)

the best system of government and will support
_____, education, and the economy.
(plural noun)

I guarantee _____ will only get
(plural noun)

_____ in this administration. Our
(adjective)

future as Floridians is _____
(adverb)

promising. Finally, in the words of

_____, the purpose of
(famous person)

_____ is to be in the service of the
(noun)

people, by the _____, and for the people.
(plural noun)

I respectfully take on the _____ task of
(adjective)

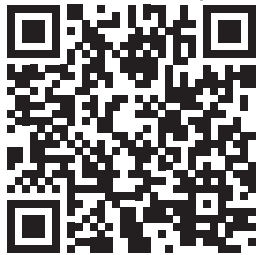
service to _____ the citizens to success.
(verb)

▶ FOLD HERE ALONG DOTTED LINE ▶

Archaeology Activities Online

Looking for something to do on a rainy day this summer? Check out these free online activities!

In **Ancient Graffiti** we look at how people in the past told stories by drawing pictures. Can you tell a story with a drawing?



For thousands of years, people have been drawing stories on cave walls. What they mean, we don't always know, but archaeologists using both the drawings and artifacts are always trying to understand them better.

This activity will guide you in learning about and making your very own cave art stories.

SMASH POT

Make your own artifact puzzle!



When archaeologists look for signs of past people, they almost never find a nice, whole pot. All they find are the bits left over and they must put those pieces together to see what they can learn. Sometimes those pieces even fit together like a puzzle!



In **Smash Pot** you will get to decorate a terracotta saucer, smash it, and then try and put it back together! This is a 60-90 minute activity that is excellent for 6 and up.



Spider Web Exploration

Adapted from "Growing Up WILD" Exploring Nature with Young Children.

Materials:

- Large sheet of dark colored paper
- 2 rolls ½ inch tape, one roll should be double-sided tape

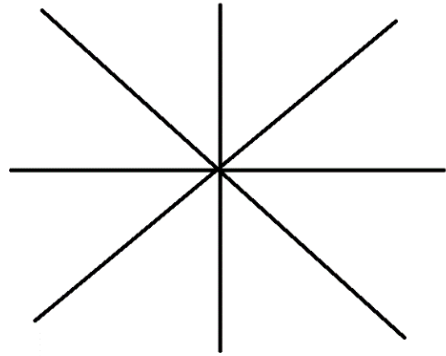
Procedure:

1. Create a spider web pattern on the large sheet of darkly colored paper. Use the single-sided tape to create the "spoke" pattern. Use the double-sided tape for the spiral pattern.
2. Have children "walk" across the different strands of the using the tips of two fingers. Some strands on a spider's web are sticky, others are not. A spider does not stick to its web because it tiptoes.
3. Have children lay a flat palm on the web (like an insect flying into the web). Their hand sticks because it touches multiple strands at once.
4. Follow up this activity with outdoor exploration by looking for different spiders and their webs. Identify spiders you find using Seek by iNaturalist. (smartphone app)

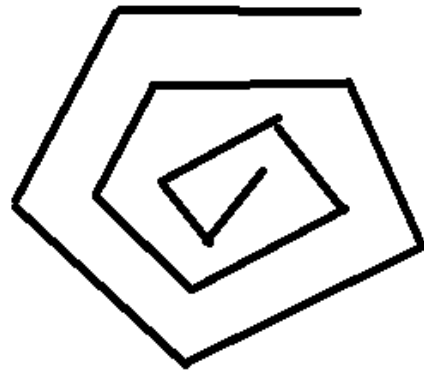


A Golden-silk Orb Weaver (banana) spider on web

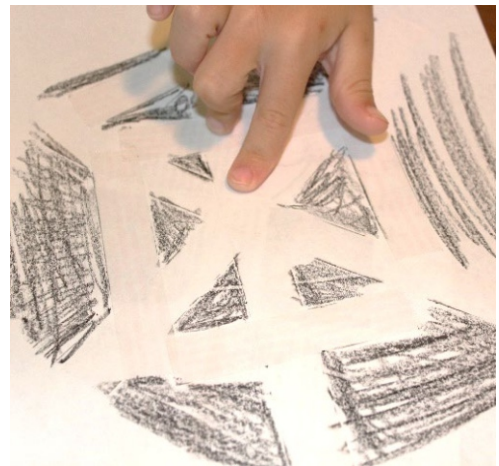
A tactile activity for learning about spider webs. Summer is a great time to explore the diversity of spider webs outdoors!



Use single sided tape to create this pattern



Use double-sided tape to create this pattern over the single sided tape.



Exploring the web with fingers.



Florida Youth Conservation
Centers Network



Activity: Scavenger Hunt

Throughout the summer, see if you or your child can find these items. Then, sit and play “I Spy” together.

This is a great vocabulary building game, where children **LOVE** to “stump” their parents! Rainy day?

Find a few children’s books about summer and see how many of these items your child can “spy” as you read the story.

Summer Scavenger Hunt

To Find



A Daisy



Fruit Growing



A Feather



A Shell

To Look For



Ladybug



Rainbow



Lightning Bug



Reflection
In The Water



Dragonfly



Spider's Web



Butterfly

Visit The Grove Museum and ask staff for a scavenger hunt to complete.

+10 points

**Try new foods all summer long!
Keep a journal of each new food.**

+5 points per food

Start

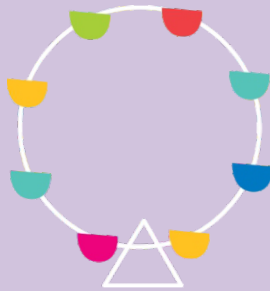


Keep a journal of books you read this summer.

+5 points per book

Invent your own card game or board game.

+10 points



Write and mail letters to a summer pen pal.

+5 points per letter

**The MagLab is home to the strongest magnets in the world!
Experiment to find the strongest magnets in your home.**

(Always keep magnets away from electronics and computers!)

+10 points

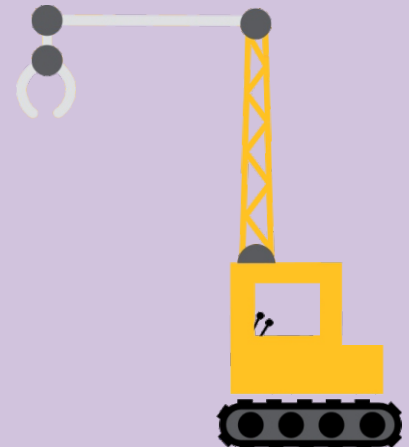
Learn more about careers by visiting pbslearningmedia.org to search for and watch "Career Connections" videos.

+5 points per video

Plant a pollinator friendly garden.

Visit wfsu.org/beegarden for more info.

+15 points



Sign up for a Leon County Public Library card online.

www.LeonCountyLibrary.org/LibraryCard

**Your library card is powerful!
Books, Kanopy and a Library of Things!**

+10 points

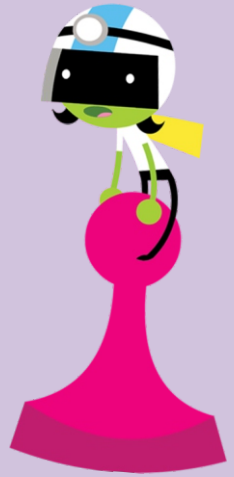
**What are you grateful for?
Keep a summer gratitude tracker.**

+10 points



Summer Challenge Checklist Level Up Land!

Submit your checklist by August 8 to win fun PBS KIDS prizes.
Follow WFSU Education on Facebook or check
wfsu.org/summerchallenge for more info.



Visit
pbslearningmedia.org
and search for
"Camp TV"
to find videos and
activities to try.
+5 points per activity

Visit the Florida
Historic Capitol
Museum to complete
a scavenger hunt.
+10 points

Complete at least 5
Cyberchase Green It Up!
Kids Can Help activities
(can be found in this
activity booklet and on
wfsu.org/education).
+10 points

Total Points

Finish

Take daily walks
with your family
or friends.
+5 points per walk

Build a fort with
boxes or blankets
in the yard or
in the house.
+10 points

wfsu
PUBLIC MEDIA

@WFSUEducation
wfsu.org/education



Scouting for insects is an important part of every gardener's day.
 Can you find the 10 insects hidden in the flowers?

- | | | | | | |
|-----------|-------------|---------|---------|-----------|-------------|
| Monarch | Monarch | Walking | Ladybug | Dragonfly | Beetle |
| Butterfly | Caterpillar | Stick | Bee | Ant | Fly |
| | | | | | Grasshopper |

What insects can you find outside? Look at flowers, under leaves
 and more to scout for these six legged creatures.



KIDS CAN HELP!

CHECKLIST

We can all take care of the environment by making helpful choices every day. Check off the boxes for the items on the list that you do to help:

Appreciating Nature

- ☐ Leave nature where you find it. Don't pick wildflowers or bring home natural objects. Take pictures instead of bringing home souvenirs!
- ☐ Stay on trails when hiking.

Composting

- ☐ Create a compost bin at home.
- ☐ Bring food scraps from home to a local farmer's market or garden that composts if there is one near you.

Coral Reefs

- ☐ Throw away trash properly. Litter often ends up in water that runs into the ocean and hurts marine habitats.
- ☐ Use reef-safe sunscreen.

Deforestation

- ☐ Look for recycled paper products or those with "Sustainable Forestry Initiative" labels.
- ☐ Look out for foods that have "palm oil" listed as an ingredient and try to find something else or buy a "Rainforest Certified" product instead. Companies cut down large rainforests to grow palm oil trees to make the oil.

Gardening

- ☐ Plant a container garden either in your yard, on a porch, or inside by a window.
- ☐ Learn how to use leftover greens in the kitchen, like celery, lettuce, and pineapple, to plant new fruits and veggies.
- ☐ Help at a local community garden with planting, weeding, picking, and caring for plants.

Food Miles

- ☐ Help your family find locally grown food at the grocery store. You can also shop at farmer's markets to find local food.
- ☐ Learn which foods grow in which season where you live. Buying local food right after it's been picked limits the distance it travels to get to you.

Food Waste

- ☐ Take a small portion on your plate at first, so that leftovers can be saved more easily.
- ☐ Don't throw away fruits or veggies with small bruises. Cut off the bruised part and eat the rest.

Migration

- ☐ In the fall and the spring, when birds are migrating, try to keep lights off at night. Birds can sometimes fly towards the lights and hit your windows by accident.
- ☐ Make your windows obvious with decals, UV stickers, screens, or other decorations.

Pollinators

- ☐ Plant pollinator-friendly flowers that are native to your area. Research online to see what you should plant.
- ☐ Be nice to bees! The best way to avoid being stung is to stay calm and not disturb them.

Sustainable Design

- ☐ Bring your lunch in a reusable lunchbox or bag instead of a paper one.
- ☐ Choose to fix items when they break rather than throwing them away and getting something new.

Trees

- ☐ Get involved with tree planting!
- ☐ Be kind to trees by not carving into them or letting pets go to the bathroom on them.

Learn more about all these topics at wnet.org/Education/GreenItUp





**Scouting for insects is an important part of every gardener's day.
Can you find the 10 insects hidden in the flowers?**

Monarch	Monarch	Walking	Ladybug	Dragonfly	Beetle
Butterfly	Caterpillar	Stick	Bee	Ant	Grasshopper

**What insects can you find outside? Look at flowers, under leaves
and more to scout for these six legged creatures.**

LEVEL UP BINGO

Level up by completing this fun bingo with skills to get your little one ready for school! Join one of the Leon County Public Library's Story Times for more skill building fun while we read, sing, and play! Check our calendar for a Story Time near you: tinyurl.com/LCPLStoryTime

BUILD A
TOWER
WITH A
FRIEND

SHARE A
BOOK

COLOR A
PICTURE FOR
SOMEONE

READ A
BOOK ABOUT
CARING

READ A
BOOK WITH A
FAMILY
MEMBER

DONATE
A TOY TO
CHARITY

HELP CLEAN
UP AFTER
DINNER

SEND A
THANK YOU
CARD TO
SOMEONE

PLAY A GAME
TO PRACTICE
TAKING
TURNS

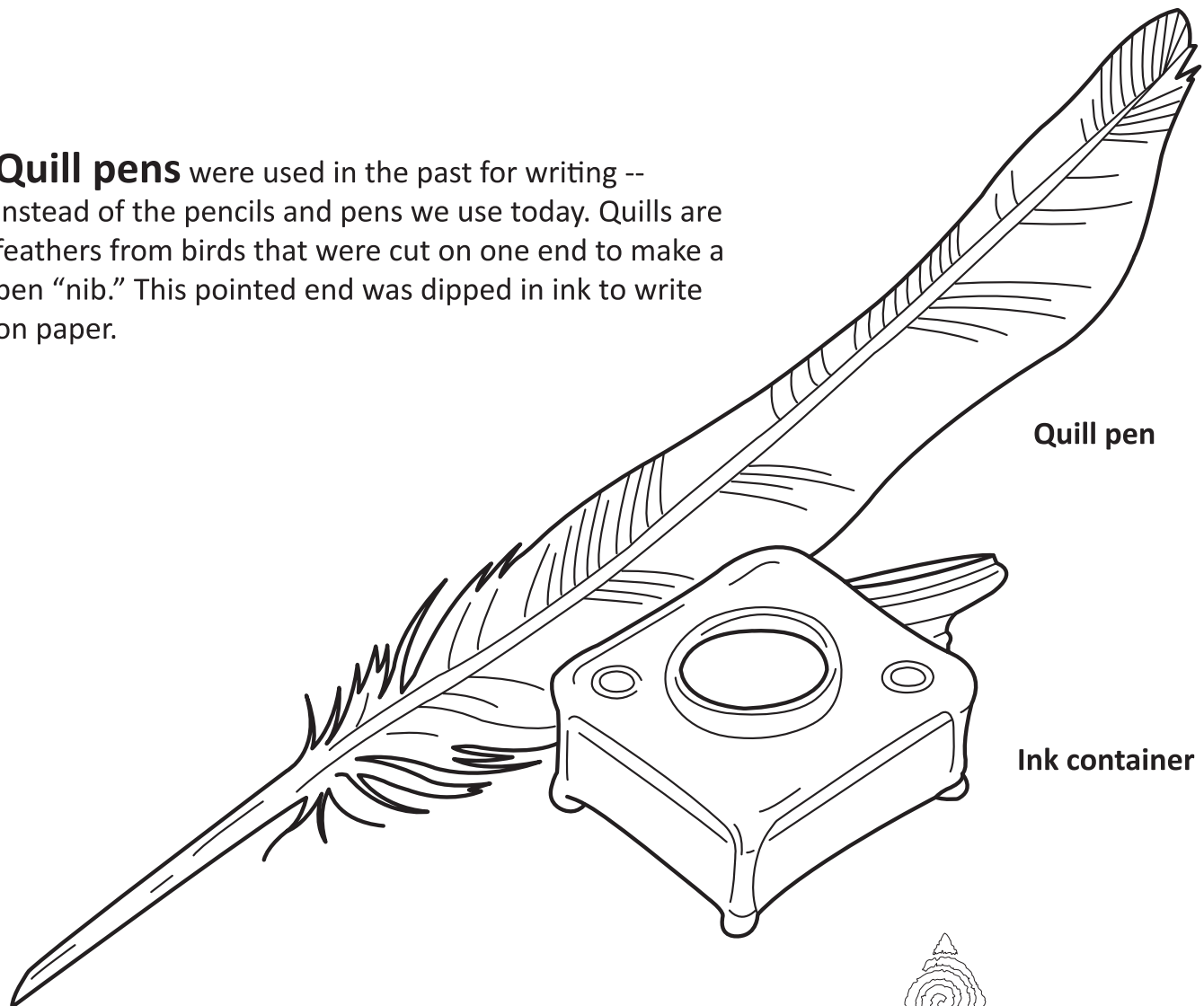
COLORING ACTIVITY

Just like today, the Apalachee Native peoples and Spanish settlers who lived at Mission San Luis over 300 years ago learned many different skills that helped them every day. Each group learned skills in *communication* - or the ways that people exchange information.

The Spanish friars (priests) at San Luis were good writers in order to record important information on paper. The Apalachee people, on the other hand, used mostly oral communication (speaking) to pass down information about their laws, history, and culture.

Communication - both writing and speaking - are very important skills that we learn today as well!

Quill pens were used in the past for writing -- instead of the pencils and pens we use today. Quills are feathers from birds that were cut on one end to make a pen "nib." This pointed end was dipped in ink to write on paper.



Quill pen

Ink container



Journey back in time
to 17th-century Florida at
Mission San Luis!

Tuesday-Sunday 10 am - 4 pm

Mission San Luis

Florida's Apalachee-Spanish Living History Museum
2100 West Tennessee Street | missionsanluis.org

UNSCRAMBLE THE WORDS!

USE THE PICTURES TO HELP SOLVE THE PUZZLE AND FILL IN THE BLANKS

Florida is well known all over the world for its gorgeous tourist attractions! The state's tourism industry opened the state by land, air, and sea. One notable person who really helped Florida 'level-up' and put the state on the map was Henry $\frac{\quad}{1} \frac{\quad}{2} \frac{\quad}{3} \frac{\quad}{4} \frac{\quad}{5} \frac{\quad}{6} \frac{\quad}{7}$. He built elaborate luxury hotels that drew in tourists from all over!



A L U I O E O T M B

_____ 5 _____



L R D A R O I A

_____ 2 _____



A D F R I O L R A G T O

1 _____
4 _____



R P I O A T R

_____ 7 _____



C E A H B

_____ 3 _____



E A O S A T T M B

_____ 6 _____

At the Museum of Florida History, we showcase exciting and informative exhibits on 12,000 years of Florida's history and culture. Our curators, designers, and educators all work together to bring the past to life!

M · F · H *Florida*
MUSEUM of *History*

Visit us at:

500 South Bronough Street
museumoffloridahistory.com
850-245-6400
Free Admission and Parking



Birds in Flight: Migration Maze

Birds use the **Earth's magnetic Field** to find their way when they migrate. Many birds migrate to warmer places during the winter to escape the cold.

Find your way from the cold winter to the warm weather in the maze below.



For more activities head to: [NationalMagLab.org/Education/Magnet-Academy](https://www.nationalmaglab.org/education/magnet-academy)

The National MagLab is funded by the National Science Foundation and the State of Florida.



Tallahassee Museum

TREE TO TREE ADVENTURES

T: (850) 575-8684
F: (850) 575-8243
W: TallahasseeMuseum.org
3945 Museum Drive
Tallahassee, FL 32310

The Tallahassee Museum seeks to transform people's lives, community, and the world through an enhanced understanding of our region's natural and cultural environments.

The Tallahassee Museum has a collection of Jim Gary's dinosaurs. Jim Gary was an artist who turned recycled car parts into amazing works of art; mainly dinosaurs. From using vehicle brake shoes as dinosaur feet to a VW roof for an Ankylosaurus shell, his creativity was astounding. He had to use his problem-solving skills to make each piece fit perfectly together to create these larger-than-life metal dinosaurs.

Here are some different ideas for you to use recycled materials for your own dinosaur art projects.

Dino Plant Holder

Materials:

Plastic dinosaur

Box Cutter or sharp cutting tool

Small plant

Paint

1. With an adult's help, cut a hole in the back of plastic dinosaur.
2. Paint the dinosaur with your favorite colors.
3. Add some soil and a small succulent plant, and you now have a fun planter!



DIY Dino Feet

Materials:

2 recycled tissue boxes

Markers

Old sponge

Glue or hot glue

Scissors

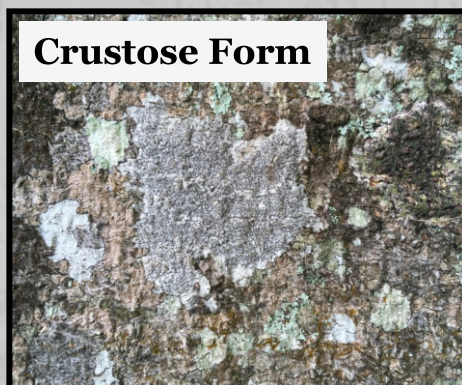
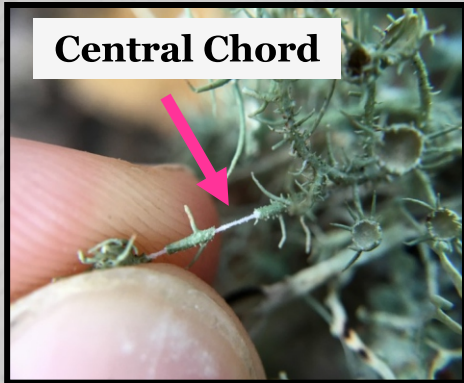
1. Remove the plastic interior from the tissue boxes.
2. Color the tissue boxes.
3. Draw 6 triangles into an old sponge and cut them out.
4. Glue 3 triangles to each box to make them look like claws.
5. Wait for them to dry and now you have your own dino feet.



THE GROVE MUSEUM

LICHEN SCAVENGER HUNT

Search for these lichens and their look-alikes around the grounds. Once you think you've found it, see the next page for a cool fact!



THE GROVE MUSEUM

LICHEN SCAVENGER HUNT

Facts about what you found!

Fruticose Growth Form

Pronounced: fruit-ee-kose

The fruticose (branching) growth form is common for lichens found on branches or on the ground. Fruticose lichens look like coral or tiny bushes.

Apothecia

Pronounced: apo-these-ee-uh

These cup-like structures are the reproductive parts of the lichen. The fungal partner releases spores from the apothecia.

Central Chord

The lichen *Usnea* can be identified by the elastic-like chord that runs through it. Even though many other lichens look like *Usnea*, no other lichens have the chord.

Soredia

Pronounced: Sore-iddy-uh

These tiny bumps on the surface of the lichen are also reproductive parts. The fungal partner releases spores from the soredia.

Lichen Growing on Rock

Many lichens grow on rocks, including gravestones. Some crustose lichens can even grow inside solid rock, between the grains. These lichens are called endolithic (endo = within, lithic = rock).

Moss

Although they look suspiciously similar, mosses are not the same as lichens. A moss is a type of plant. If you look closely you can see that moss has leaves.

Christmas Wreath Lichen (*Herpothallon rubrocinctum*)

The Christmas wreath lichen, gets its nickname from the red ring that makes it look like a tiny wreath. This lichen is common in Florida's forests, but rare at The Grove.

Lichen Growing on Leaves

In tropical climates lichens can even grow on leaves! These lichens are called foliicolous (folii = leaves, colous = living on). Foliicolous lichens choose leaves that stay green year-round, like Magnolias.

Foliose Growth Form

The foliose (leaf-like) growth form is one of the most common for lichens. Foliose lichens appear "leafy" but those lobes are not leaves! You won't find veins or stems.

Reindeer Lichen (*Cladonia*)

Reindeer lichen, better known as reindeer moss, is not a moss at all. Reindeer lichens provide food for reindeer and other deer species. This lichen is common in Florida's forests, but rare at The Grove.

Crustose Growth Form

Pronounced: krust-oh-ss

The crustose (crusty) growth form is common for lichens on trees or rocks. Crustose lichens look like little circles of spray paint.

Cilia

Pronounced: silly-uh

These hair-like structures are found on the tips of some lichen. Very little is known about the purpose of cilia. Some scientists think they help collect water or discourage predators.

Tika's Wild Backyard

Level Up!

Throughout your life you will be changing... as you grow, learn new information, gain new skills, and experience new things. When you are 50 years old you will be very different than you were when you were 5. The same is true for our Wild Backyard Critters. Many of the wildlife around us looks much different than they did when they first entered the world. See if you can match the young critters with their Levelled-Up versions:



Environmental programs for all ages!
TikasWildBackyard@gmail.com

Halves of Even Numbers

Number	2	4	6	8	10	20	30	40	50	60	70	80	90	100
Half	1	2	3	4	5	10	15	20	25	30	35	40	45	50

Examples

$$\text{Half of } 36 = \text{Half of } 30 + \text{half of } 6 = 15 + 3 = 18$$

$$\text{Half of } 58 = \text{half of } 50 + \text{half of } 8 = 25 + 4 = 29$$

Work out the answers to these questions.

- Half of 28 = half of 20 + half of 8 = $10 + 4$ = _____
- Half of 46 = half of 40 + half of 6 = _____ + _____ = _____
- Half of 34 = half of _____ + half of _____ = _____ + _____ = _____
- Half of 88 = half of _____ + half of _____ = _____ + _____ = _____
- Half of 62 = half of _____ + half of _____ = _____ + _____ = _____
- Half of 56 = half of _____ + half of _____ = _____ + _____ = _____
- Half of 44 = half of _____ + half of _____ = _____ + _____ = _____
- Half of 78 = half of _____ + half of _____ = _____ + _____ = _____
- Half of 86 = half of _____ + half of _____ = _____ + _____ = _____
- Half of 92 = half of _____ + half of _____ = _____ + _____ = _____
- Half of 54 = half of _____ + half of _____ = _____ + _____ = _____
- Half of 76 = half of _____ + half of _____ = _____ + _____ = _____

UNSCRAMBLE EACH OF THE SENTENCES



monster

Max

grey

a

has

funny

feet

smell

monster

anyone

has

Maxs

boat

seen

like

climb

trees

to

monsters

sailboat

Max

a

has

red

Elizabeth "Bessie" Hopkins was asked to write the history of Thomas County in 1951 and collected thousands of documents and photographs over the years that she worked on the project and interviewed many people.

There was no piece of the puzzle too small for Miss Bessie!



Be Like Bessie

Ask a family member or friend the questions on each piece and write their answers.

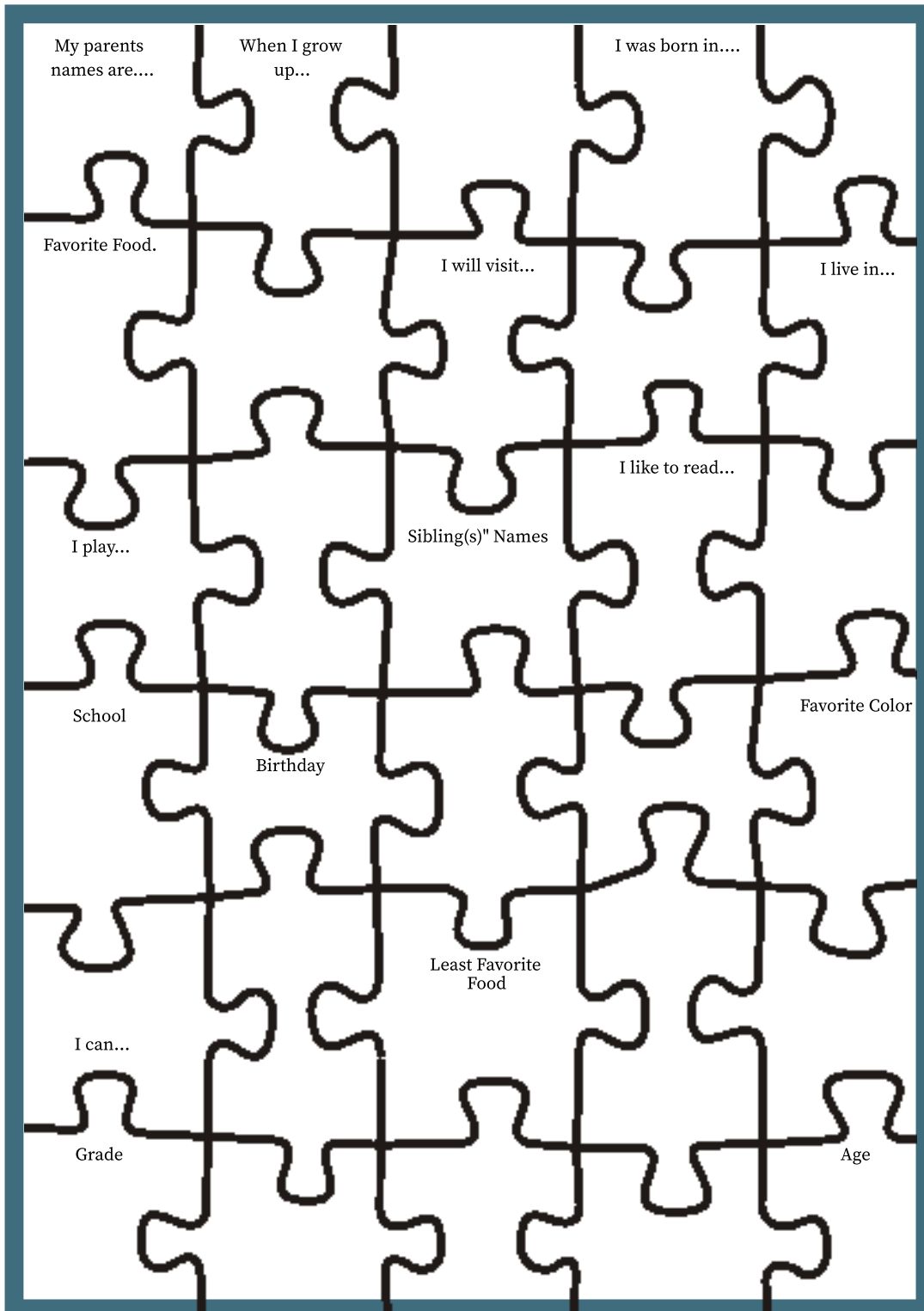
For those pieces without questions, ask them to give you a fact about themselves or draw a picture that represents them.

Together, the puzzle pieces make up their story!



THOMASVILLE
HISTORY CENTER

thomasvillehistory.org





A-Z World of Work



Think of a career that you might want to learn more about that begins with each letter of the alphabet.

a

b

c

d

e

f

g

h

i

j

k

l

m

n

o

p

q

r

s

t

u

v

w

x

y

z